

# Oasis View

## 2 Bedroom luxury log house with porches

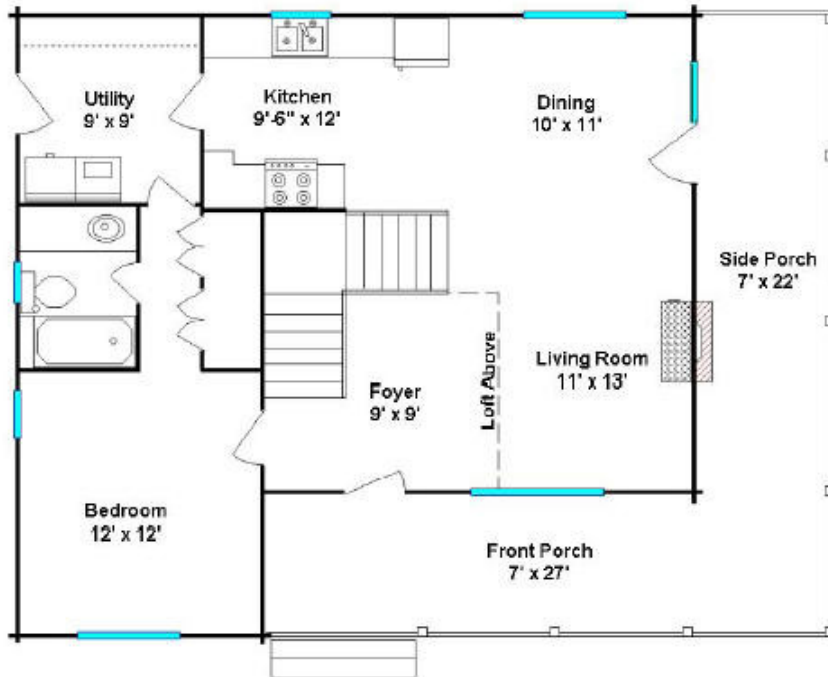


The spacious, luxury "Oasis View" can be supplied by us and erected by our construction team at the location of your choice. Experience the warmth and ambience that only a log house can give. Our logs come from sustainable sources and our unique lamination process ensures the long life of the property.



All floor plan measurements are approximations and are subject to change. Up-to-date, and accurate layouts are supplied in the blueprints for all of our models.

# Oasis View



## First Floor (Ground)

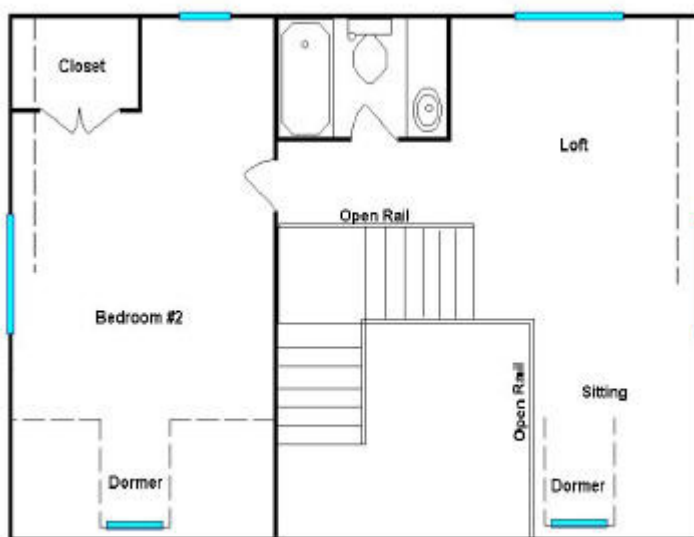
Open Plan Dining & living area

Kitchen with separate utility

Master bedroom with en-suite bathroom (& tub)

Porches to side & front

“Oasis View” gives you superb accommodation in a spacious environment. Let us work with you to customise “Oasis View” to be the perfect Log house you have always dreamt of. Depending on terrain, this property can be erected on a concrete base, or on stilts.



## Second Floor

Spacious bedroom with built-in wardrobe

Separate bathroom with tub

Sitting area

**1<sup>st</sup> Floor: 788 sq. ft (73.2 sq. m) 2<sup>nd</sup> Floor: 680 sq. ft (63.2 sq. m)**  
**Porches: 343 sq. Ft (31.9 sq. m)**  
**Total area: 1811 sq. ft (168.25 sq. m)**